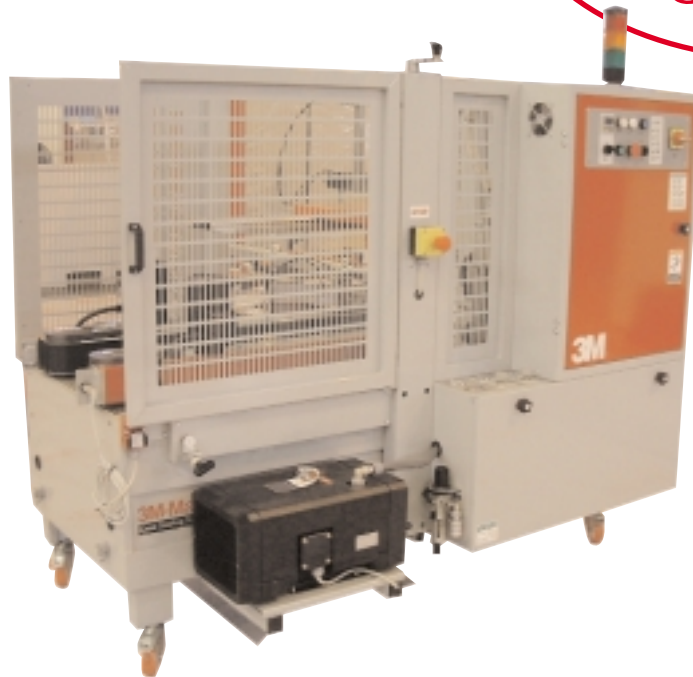


Case Former 400cf

Automatically forms and bottom flap seals cases ready for filling



The 3M 400cf Case Former is designed to feed, form and seal the bottom flaps of regular slotted cartons (RSCs) with one of a range of Scotch® box sealing tapes, ready then to be filled.

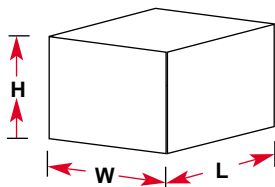
Production speeds of 800 boxes per hour average (14 boxes per minute average) can be achieved, dependent upon the box size, with a manual size adjuster.

The 400cf is ideal for integration into your automatic packaging line, used in conjunction with 3M-Matic™ Case Sealers. Left or right hand configurations are available.

Machine Capabilities:

- Box size:

	W	H	L
MIN	150	120	200
MAX	350	500	450



- Box Sealing Tape Width: 50mm utilising a 3M AccuGlide™ II Taping Head
- Belt Speed: 21 metres per minute
- Production Output: 14 boxes per minute (average) depending upon box size

Part of a Totally Integrated Packaging Line Solution

3M provides the entire integrated system for case forming, labelling and sealing:

- An extensive range of case sealing machines
- Side / Top Label Applicator
- A range of Scotch® box sealing tapes

4 Good Reasons To Choose the 3M 400cf Case Former ...

Durability

3M machines are built to last. A compact, functional industrial design, including robot welded steel frames, radiused bends and large sections for added strength finished with a tough epoxy paint finish.



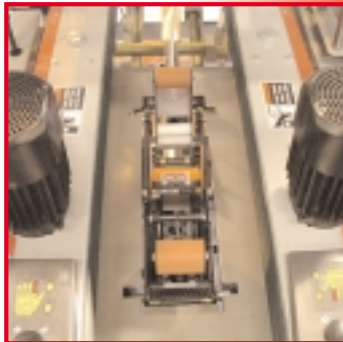
Operator-Friendly

3M machines are operator friendly. The major controls of the 400cf are conveniently located on a main control panel for operator convenience and efficiency.



Reliability

3M machines are reliable. The 3M AccuGlide™ II taping head has a curvilinear track for low case impact for a consistent tape application with an exclusive tape buffing system for continuous, consistent tight seals.



Safety

3M machines have safety built in. Heavy duty perforated sheet metal guards allow visibility during operation and hinge open for access. All the hinged guards have safety interlocks meaning the 400cf will not run with the guards open.



SPECIFICATION

Power Requirements:

- A. Electrical: Standard power supply 230/400V 50Hz 3ph
- B. Air Supply: Maximum 6 Bar 450l/minute

Box Storage Capacity:

80 to 150 boxes, dependent upon individual box thickness

Machine Weight:

600kg

Belt Speed:

21 metres per minute

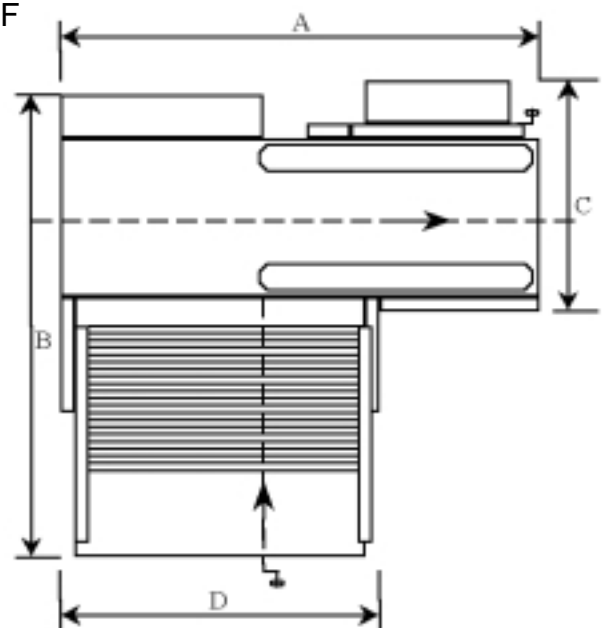
Agency Approval:

The machine is designed to meet CE requirements



Footprint:

400CF



Reference:	A	B	C	D	h*
Dimension (mm)	1720	2280	1060	1100	1700

* Without optional castors. Castors increase height by 100mm.